

### Description:

These air handlers are designed for horizontal mounting into a furred down ceiling, and will handle up to 1150 CFM and up to 3 ton of cooling with a DX cooling or heat pump coil, or Chilled Water coil.

These units will provide up to 10 KW of electric heat or up to 51,000 MBTUH of hot water heating.

For DX cooling requirements these air handlers can be matched with most manufacturer's condensing units and heat pumps.

The "S" series air handlers are exposed blower type, and the "C" series is equipped with an insulated cabinet over the top and sides. The bottom of the case is open to accommodate a louvered/filtered access panel.

The cased units have a knock-out for rear return air. Return air duct flanges and filter racks are field supplied

### Standard Features:

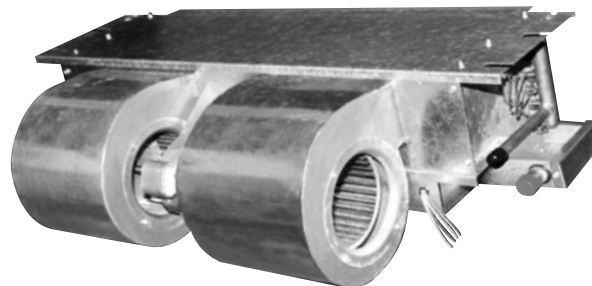
- \* Electric heat models are 208/230/1/60.
- \* Hot water heat models are 115/1/60.
- \* Water circulating pump is factory installed on hot water heat models.
- \* Space saving design.
- \* Galvanized steel blower wheels.
- \* Prewired for cooling and heating.
- \* Control transformer.
- \* Primary and secondary condensate drain pans.
- \* Easy access for service and maintenance.
- \* High efficiency copper tubs aluminum fin coils.

### Field Installed Options:

- \* Louvered or non-louvered ceiling access panels.
- \* Time delay relay.

### Factory Installed Options:

- \* Thermostatic expansion valve, either R-22 or R-410A, all expansion valves are suitable for heat pump application.
- \* Deduct for removing hot water circulating pump for boiler loop applications.



All Technical Information Subject To Change Without Notice

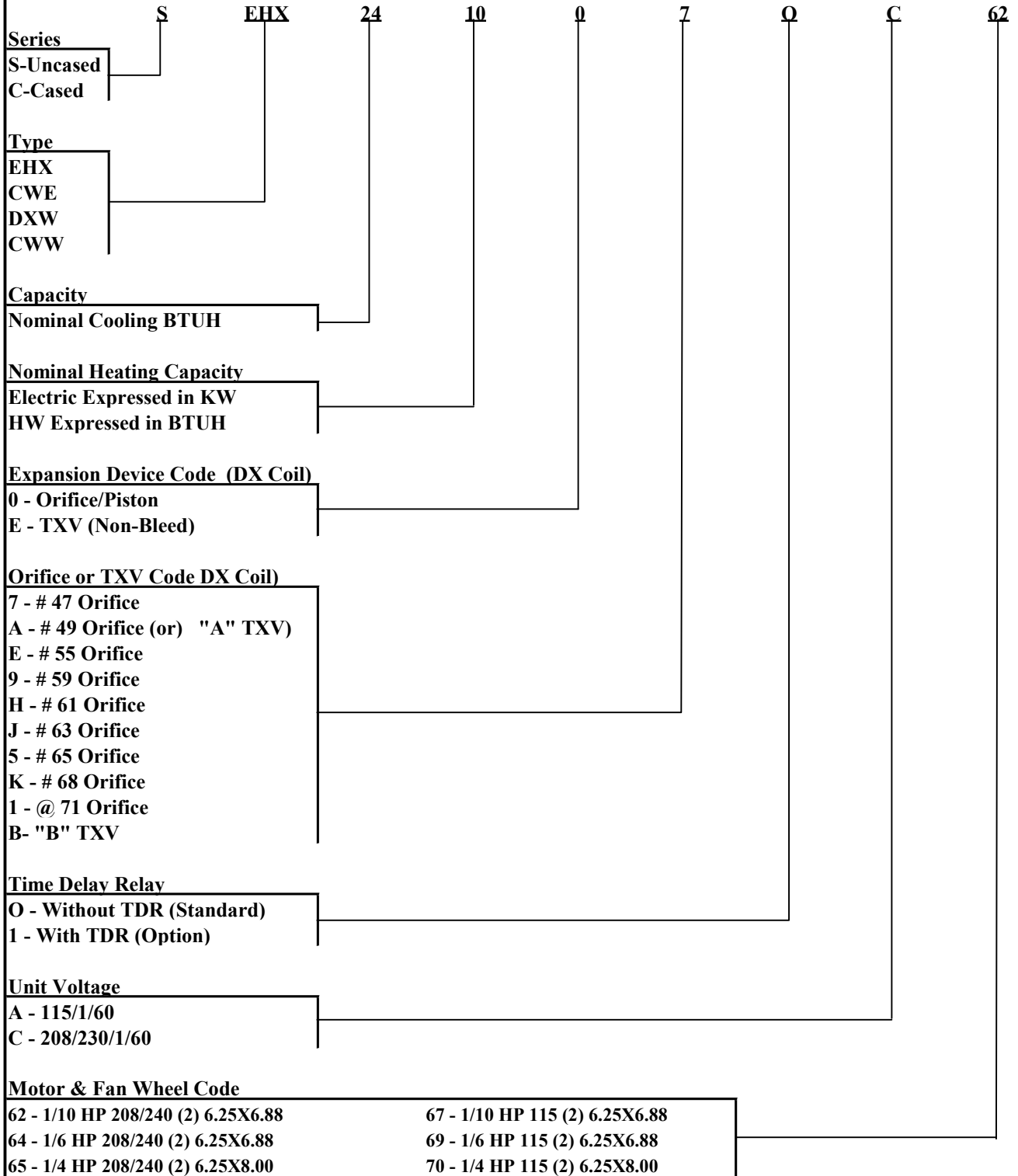
Form: SEHX/070106-1



**HORIZONTAL CEILING MOUNTED AIR HANDLER**

SEHX/CEHX Direct Expansion Cooling Electric Heating  
 SDXW/CDXW Direct Expansion Cooling Hot Water Heating  
 SCWE/CCWE Chilled Water Cooling Electric Heating  
 SCWW/CCWW Chilled Water Cooling Hot Water Heating

**UNIT NOMENCLATURE**



All Technical Information Subject To Change Without Notice



Form: SEHX/070106-2

For more information contact Customer Service 817-624-0820  
 or your SunTherm Representative.

501 Terminal Road Fort Worth, Texas 76106 Ph. 817-624-0820 Fx. 817-624-8581



**PRODUCT NOMENCLATURE**  
**EVAPORATOR COIL**

**C**      **E**      **030**      **S**      **D6B**

**COIL**

C = Cooling/Heat Pump

**TYPE**

S = Slant Coil

**NOMINAL CAPACITY**

- 18 = 18000 BTUH
- 24 = 24000 BTUH
- 30 = 30000 BTUH
- 36 = 36000 BTUH

**SLAB CONFIGURATION**

S = 1 Slab (Single Slab Coil)

**SLAB CODE**

Factory Use

**All Technical Information Subject To Change Without Notice**

Form: SEHX/070106-3



For more information contact Customer Service 817-624-0820  
or your SunTherm Representative.

501 Terminal Road Fort Worth, Texas 76106 Ph. 817-624-0820 Fx. 817-624-8581



**HORIZONTAL CEILING MOUNTED AIR HANDLER**

SEHX/CEHX Direct Expansion Cooling Electric Heating  
 SDXW/CDXW Direct Expansion Cooling Hot Water Heating  
 SCWE/CCWE Chilled Water Cooling Electric Heating  
 SCWW/CCWW Chilled Water Cooling Hot Water Heating

**FAN DATA**

SEHX / CEHX SCWE / CCWE	Motor HP	CFM @ External Static Pressure						
		0.00"	0.05"	0.10"	0.15"	0.20"	0.25"	0.30"
-18-XX-0A-0C64	1/6	810	785	765	740	720	700	680
-19-XX-0E-0C64	1/6	910	880	855	830	805	785	765
-24-XX-09-0C64	1/6	950	920	890	875	850	825	805
-25-XX-0H-0C65	1/4	1160	1130	1100	1070	1040	1020	985
-30-XX-0J-0C65	1/4	1180	1145	1115	1085	1055	1025	1000
-31-XX-05-0C65	1/4	1160	1130	1100	1070	1040	1020	985
-34-XX-0K-0C65	1/4	1256	1212	1172	1133	1084	1059	1029
-35-XX-01-0C65	1/4	1216	1172	1138	1108	1049	1024	995
-36-XX-0K-0C65	1/4	1275	1230	1190	1150	1100	1075	1045
-37-XX-01-0C65	1/4	1235	1190	1155	1125	1065	1040	1010

**FAN DATA**

SDXW / CDXW SCWW / CCWW	Motor HP	CFM @ External Static Pressure						
		0.00"	0.05"	0.10"	0.15"	0.20"	0.25"	0.30"
-18-21-0A-0C69	1/6	794	769	750	725	706	686	666
-19-21-0E-0C69	1/6	892	862	838	813	789	769	750
-24-23-09-0C69	1/6	931	902	872	858	833	809	789
-25-23-0H-0C69	1/4	1137	1107	1078	1049	1019	1000	965
-30-27-0J-0C70	1/4	1156	1122	1093	1063	1034	1005	980
-31-28-05-0C70	1/4	1137	1107	1078	1049	1019	1000	965
-34-30-0K-0C70	1/4	1231	1188	1149	1110	1062	1038	1008
-35-30-0K-0C70	1/4	1192	1149	1115	1086	1028	1004	975
-36-32-0K-0C70	1/4	1250	1205	1166	1127	1078	1054	1024
-37-32-0K-0C70	1/4	1210	1166	1132	1103	1044	1019	990

All Technical Information Subject To Change Without Notice

Form: SEHX/070106-4



For more information contact Customer Service 817-624-0820  
 or your SunTherm Representative.  
 501 Terminal Road Fort Worth, Texas 76106 Ph. 817-624-0820 Fx. 817-624-8581



**HORIZONTAL CEILING MOUNTED AIR HANDLER**

SEHX/CEHX Direct Expansion Cooling Electric Heating  
 SDXW/CDXW Direct Expansion Cooling Hot Water Heating  
 SCWE/CCWE Chilled Water Cooling Electric Heating  
 SCWW/CCWW Chilled Water Cooling Hot Water Heating

**Physical Data:**

Model No.	Motor HP HP	DX Rows	CW Rows	HW Rows	Suction Conn.	Liquid Conn.	CW Conn.	HW Conn.	Shp. Wght.
<b>SEHX &amp; CEHX Series DX Cooling Electric Heat</b>									
18	1/6	3	N/A	N/A	3/4	3/8	N/A	N/A	60
19	1/6	4	N/A	N/A	3/4	3/8	N/A	N/A	65
24	1/6	3	N/A	N/A	3/4	3/8	N/A	N/A	60
25	1/4	4	N/A	N/A	3/4	3/8	N/A	N/A	75
30	1/4	3	N/A	N/A	3/4	3/8	N/A	N/A	70
31	1/4	4	N/A	N/A	3/4	3/8	N/A	N/A	75
34	1/4	3	N/A	N/A	3/4	3/8	N/A	N/A	74
35	1/4	4	N/A	N/A	3/4	3/8	N/A	N/A	80
36	1/4	3	N/A	N/A	3/4	3/8	N/A	N/A	85
37	1/4	4	N/A	N/A	3/4	3/8	N/A	N/A	90
<b>SDXW &amp; CDXW Series DX Cooling Hot Water Heat</b>									
18	1/6	3	N/A	2	3/4	3/8	N/A	5/8	64
19	1/6	4	N/A	2	3/4	3/8	N/A	5/8	69
24	1/6	3	N/A	2	3/4	3/8	N/A	5/8	64
25	1/4	4	N/A	2	3/4	3/8	N/A	5/8	79
30	1/4	3	N/A	2	3/4	3/8	N/A	5/8	74
31	1/4	4	N/A	2	3/4	3/8	N/A	5/8	79
34	1/4	3	N/A	2	3/4	3/8	N/A	5/8	78
35	1/4	4	N/A	2	3/4	3/8	N/A	5/8	84
36	1/4	3	N/A	2	3/4	3/8	N/A	5/8	89
37	1/4	4	N/A	2	3/4	3/8	N/A	5/8	94
<b>SCWE &amp; CCWE Series Chilled Water Cooling Electric Heat</b>									
18	1/6	N/A	4	N/A	N/A	N/A	5/8	N/A	65
19	1/6	N/A	5	N/A	N/A	N/A	5/8	N/A	70
24	1/6	N/A	4	N/A	N/A	N/A	5/8	N/A	65
25	1/4	N/A	5	N/A	N/A	N/A	5/8	N/A	80
30	1/4	N/A	4	N/A	N/A	N/A	5/8	N/A	75
31	1/4	N/A	5	N/A	N/A	N/A	5/8	N/A	80
34	1/4	N/A	4	N/A	N/A	N/A	5/8	N/A	79
35	1/4	N/A	5	N/A	N/A	N/A	5/8	N/A	85
36	1/4	N/A	4	N/A	N/A	N/A	5/8	N/A	90
37	1/4	N/A	5	N/A	N/A	N/A	5/8	N/A	95
<b>SCWW &amp; CCWW Series Chilled Water Cooling Hot Water Heat</b>									
18	1/6	N/A	4	2	N/A	N/A	5/8	5/8	67
19	1/6	N/A	5	2	N/A	N/A	5/8	5/8	72
24	1/6	N/A	4	2	N/A	N/A	5/8	5/8	67
25	1/4	N/A	5	2	N/A	N/A	5/8	5/8	82
30	1/4	N/A	4	2	N/A	N/A	5/8	5/8	77
31	1/4	N/A	5	2	N/A	N/A	5/8	5/8	82
34	1/4	N/A	4	2	N/A	N/A	5/8	5/8	81
35	1/4	N/A	5	2	N/A	N/A	5/8	5/8	87
36	1/4	N/A	4	2	N/A	N/A	5/8	5/8	92
37	1/4	N/A	5	2	N/A	N/A	5/8	5/8	97

All Technical Information Subject To Change Without Notice

Form: SEHX/070106-5



For more information contact Customer Service 817-624-0820  
 or your SunTherm Representative.

501 Terminal Road Fort Worth, Texas 76106 Ph. 817-624-0820 Fx. 817-624-8581

# SunTherm<sup>TM</sup>

HEATING PRODUCTS

## HORIZONTAL CEILING MOUNTED AIR HANDLER

SEHX/CEHX Direct Expansion Cooling Electric Heating  
 SDXW/CDXW Direct Expansion Cooling Hot Water Heating  
 SCWE/CCWE Chilled Water Cooling Electric Heating  
 SCWW/CCWW Chilled Water Cooling Hot Water Heating

### PERFORMANCE & ELECTRICAL DATA (ELECTRIC HEAT)

Model Number	Nominal Tons	Nominal CFM	Electric Heat		Capacity (BTUH)		@ 230/1/60	
			KW @ 230/1	KW @ 208/1	230/1	208/1	MCA *	MOCP
			SEHX/CEHX-18,19 SCWE/CCWE-18,19	1.5	600	0	0	0
			3.0	2.3	10245	7684	18.0	20.0
			5.0	3.8	17075	12806	28.0	30.0
			6.0	4.5	20490	15368	33.0	40.0
			8.0	6.0	27320	20490	43.0	45.0
			10.0	7.5	34150	25613	55.0	60.0
SEHX/CEHX-24 SCWE/CCWE-24	2.0	800	0	0	0	0	2.5	10.0
			3.0	2.3	10245	7684	18.0	20.0
			5.0	3.8	17075	12806	28.0	30.0
			6.0	4.5	20490	15368	33.0	40.0
			8.0	6.0	27320	20490	43.0	45.0
SEHX/CEHX-25,30,31 SCWE/CCWE-25,30,31	2.5	1000	0	0	0	0	2.5	10.0
			3.0	2.3	10245	7684	18.0	20.0
			5.0	3.8	17075	12806	28.0	30.0
			6.0	4.5	20490	15368	33.0	40.0
			8.0	6.0	27320	20490	43.0	45.0
SEHX/CEHX-34,35 SCWE/CCWE-34,35	3.0	1100	0	0	0	0	3.8	15.0
			3.0	2.3	10245	7684	19.0	20.0
			5.0	3.8	17075	12806	29.0	30.0
			6.0	4.5	20490	15368	35.0	40.0
			8.0	6.0	27320	20490	45.0	45.0
SEHX/CEHX-36,37 SCWE/CCWE-36,37	3.0	1200	0	0	0	0	3.8	15.0
			3.0	2.3	10245	7684	19.0	20.0
			5.0	3.8	17075	12806	29.0	30.0
			6.0	4.5	20490	15368	35.0	40.0
			8.0	6.0	27320	20490	45.0	45.0
10.0	7.5	34150	25613	55.0	60.0			

\* Amp Ratings @ 240/1/60 - Derate 25% for 208/1/60

### PERFORMANCE & ELECTRICAL DATA (HOT WATER HEAT)

Model Number SDXW/CDXW SCWW/CCWW	Nominal Tons	Nominal CFM	Hot Water Heating Capacity	FLA @ 115/1	MCA @ 115/1	MOCP @ 115/1
-18-21-0A-0C69	1.5	680	21,000	2.32	2.0	15
-19-21-0E-0C69	1.5	765	21,000	2.42	3.0	15
-24-23-09-0C69	2.0	805	23,000	2.42	3.0	15
-25-23-0H-0C69	2.5	985	23,000	2.42	3.0	15
-30-27-0J-0C70	2.5	1000	27,000	3.82	4.8	15
-31-28-05-0C70	2.5	985	28,000	3.82	4.8	15
-34-30-0K-0C70	3.0	1029	30,000	3.82	4.8	15
-35-30-0K-0C70	3.0	995	30,000	3.82	4.8	15
-36-32-0K-0C70	3.0	1045	32,000	3.82	4.8	15
-37-32-0K-0C70	3.0	1010	32,000	3.82	4.8	15

All Technical Information Subject To Change Without Notice



For more information contact Customer Service 817-624-0820  
 or your SunTherm Representative.

501 Terminal Road Fort Worth, Texas 76106 Ph. 817-624-0820 Fx. 817-624-8581

Form: SEHX/070106-6

# SunTherm<sup>TM</sup>

HEATING PRODUCTS

## HORIZONTAL CEILING MOUNTED AIR HANDLER

SEHX/CEHX Direct Expansion Cooling Electric Heating  
 SDXW/CDXW Direct Expansion Cooling Hot Water Heating  
 SCWE/CCWE Chilled Water Cooling Electric Heating  
 SCWW/CCWW Chilled Water Cooling Hot Water Heating

### CHILLED WATER COOLING CAPACITY

Model Number	CFM	Cooling Capacity @ E.W.T.					PD Water (Ft.Wtr)	PD Air (IWC)
		GPM	80°F / 67°F / 45°F		80°F / 67°F / 42°F			
			Total	Sensible	Total	Sensible		
SCWE/CCWE18 SCWW/CCWW18	600	2.0	14,700	12,900	15,800	13,400	1.2	0.29"
		3.0	18,100	14,600	19,700	15,300	2.6	
		4.0	20,600	15,800	22,700	16,600	4.4	
		5.0	22,600	16,700	25,000	17,600	6.8	
		6.0	24,200	17,300	26,882	18,400	9.6	
SCWE/CCWE19 SCWW/CCWW19	600	2.0	17,900	14,500	19,400	15,000	2.1	0.35"
		3.0	21,500	16,000	23,500	16,900	4.6	
		4.0	24,100	17,100	26,600	18,200	7.9	
		5.0	26,000	17,900	28,300	19,100	12.0	
		6.0	27,400	18,500	30,600	19,900	17.0	
SCWE/CCWE24 SCWW/CCWW24	800	2.0	16,400	15,000	17,500	15,800	1.2	0.44"
		3.0	20,400	17,500	22,100	18,300	2.6	
		4.0	23,500	19,000	26,000	20,000	4.4	
		5.0	25,800	20,100	28,300	21,200	6.8	
		6.0	27,700	21,000	30,600	22,200	9.7	
SCWE/CCWE25 SCWW/CCWW25	800	2.0	20,300	17,200	21,800	18,000	2.1	0.55"
		3.0	24,700	19,500	26,750	20,400	4.6	
		4.0	27,800	20,900	30,500	22,000	7.9	
		5.0	30,300	22,000	33,300	23,300	12.0	
		6.0	32,100	22,800	35,600	24,300	17.0	
SCWE/CCWE30 SCWW/CCWW30	1000	2.0	19,500	17,800	20,800	18,700	1.3	0.40"
		3.0	24,500	21,200	26,500	22,200	2.8	
		4.0	28,300	23,200	30,700	24,300	4.9	
		5.0	31,200	24,600	34,190	25,900	7.5	
		6.0	33,800	25,700	37,000	27,200	10.6	
SCWE/CCWE31 SCWW/CCWW31	1000	2.0	24,300	20,500	25,800	21,400	2.4	0.53"
		3.0	29,600	23,600	31,800	24,700	5.2	
		4.0	33,500	25,500	36,300	26,800	9.0	
		5.0	36,500	26,900	40,000	28,400	13.6	
		6.0	38,800	27,900	42,900	29,700	19.2	
SCWE/CCWE34 SCWW/CCWW34	1200	2.0	20,900	19,100	22,400	20,100	1.4	0.41"
		3.0	26,500	22,900	28,500	24,100	3.0	
		4.0	30,500	25,200	33,100	26,400	5.1	
		5.0	33,800	26,800	37,000	28,200	7.8	
		6.0	36,400	28,000	40,000	29,600	11.1	
SCWE/CCWE35 SCWW/CCWW35	1200	2.0	26,100	21,900	27,700	22,900	2.6	0.52"
		3.0	31,900	25,600	34,200	26,700	5.6	
		4.0	36,100	27,700	39,200	29,100	9.5	
		5.0	39,400	29,200	46,300	30,800	14.4	
		6.0	42,000	30,300	46,300	32,200	20.3	
SCWE/CCWE36 SCWW/CCWW36	1200	2.0	22,300	19,900	23,700	20,900	1.5	0.31"
		3.0	28,000	23,800	30,200	24,900	3.2	
		4.0	32,300	26,100	35,100	27,300	5.6	
		5.0	35,800	27,800	39,100	29,200	8.5	
		6.0	38,600	29,100	42,350	30,700	12.0	
SCWE/CCWE37 SCWW/CCWW37	1200	2.0	27,400	22,600	29,100	23,600	2.9	0.40"
		3.0	33,400	26,300	35,900	27,500	6.1	
		4.0	37,800	28,600	41,000	29,950	10.4	
		5.0	41,300	30,100	45,200	31,800	15.9	
		6.0	43,850	31,200	48,500	33,250	22.3	

All Technical Information Subject To Change Without Notice



For more information contact Customer Service 817-624-0820  
 or your SunTherm Representative.

501 Terminal Road Fort Worth, Texas 76106 Ph. 817-624-0820 Fx. 817-624-8581

Form: SEHX/070106-7



**HORIZONTAL CEILING MOUNTED AIR HANDLER**

- SEHX/CEHX Direct Expansion Cooling Electric Heating
- SDXW/CDXW Direct Expansion Cooling Hot Water Heating
- SCWE/CCWE Chilled Water Cooling Electric Heating
- SCWW/CCWW Chilled Water Cooling Hot Water Heating

**HOT WATER HEATING CAPACITY ( 2 ROW HW COIL)**

Model Number	Coil Rows	CFM	Heating GPM	PD Ft. Wt.	Heating Capacity @ E.W.T.			
					140°F	160°F	170°F	180°F
SDXW/CDXW-18-21	2	600	3.0	3.3	21,100	27,300	30,500	33,600
SDXW/CDXW-19-21	2	600	3.0	3.3	22,500	29,100	32,400	35,800
SDXW/CDXW-24-23	2	800	3.0	3.3	22,700	29,400	32,700	36,100
SDXW/CDXW-25-23	2	800	3.0	3.3	22,700	29,400	32,700	36,100
SDXW/CDXW-30-27	2	1000	3.0	3.7	27,800	36,000	40,100	44,300
SDXW/CDXW-31-28	2	1000	3.0	3.7	28,000	36,300	40,500	44,600
SDXW/CDXW-34-30	2	1200	3.0	3.7	29,600	38,300	42,700	47,100
SDXW/CDXW-35-30	2	1200	3.0	3.7	29,800	38,500	42,900	47,300
SDXW/CDXW-36-32	2	1200	3.0	4.2	31,800	41,200	45,900	50,600
SDXW/CDXW-37-32	2	1200	3.0	4.2	32,200	41,600	46,300	51,100

**HOT WATER HEATING CAPACITY ( SEPARATE HW COIL 4 PIPE SYSTEM)**

Model Number	Coil Rows	CFM	Heating GPM	PD Ft. Wt.	Heating Capacity @ E.W.T.			
					140°F	160°F	170°F	180°F
SCWW/CCWW-18-21	2	600	3.0	3.3	21,100	27,300	30,500	33,600
SCWW/CCWW-19-21	2	600	3.0	3.3	22,500	29,100	32,400	35,800
SCWW/CCWW-24-23	2	800	3.0	3.3	22,700	29,400	32,700	36,100
SCWW/CCWW-25-23	2	800	3.0	3.3	22,700	29,400	32,700	36,100
SCWW/CCWW-30-27	2	1000	3.0	3.7	27,800	36,000	40,100	44,300
SCWW/CCWW-31-28	2	1000	3.0	3.7	28,000	36,300	40,500	44,600
SCWW/CCWW-34-30	2	1200	3.0	3.7	29,600	38,300	42,700	47,100
SCWW/CCWW-35-30	2	1200	3.0	3.7	29,800	38,500	42,900	47,300
SCWW/CCWW-36-32	2	1200	3.0	4.2	31,800	41,200	45,900	50,600
SCWW/CCWW-37-32	2	1200	3.0	4.2	32,200	41,600	46,300	51,100

**HOT WATER HEATING CAPACITY ( SINGLE COIL 2 PIPE SYSTEM)**

Model Number	Coil Rows	CFM	Heating GPM	PD Ft. Wt.	Heating Capacity @ E.W.T.			
					140°F	160°F	170°F	180°F
SCWW/CCWW-18-21	4	600	3.0	3.3	38,103	46,000	50,900	55,870
SCWW/CCWW-19-22	5	600	3.0	3.3	41,108	49,690	54,980	60,275
SCWW/CCWW-24-23	4	800	3.0	3.3	45,193	54,510	60,380	66,265
SCWW/CCWW-25-23	5	800	3.0	3.3	49,288	59,550	65,910	72,270
SCWW/CCWW-30-27	4	1000	3.0	3.7	53,517	64,600	71,530	78,470
SCWW/CCWW-31-28	5	1000	3.0	3.7	58,048	70,170	77,640	85,115
SCWW/CCWW-34-30	4	1200	3.0	3.7	59,617	72,020	79,745	87,415
SCWW/CCWW-35-30	5	1200	3.0	3.7	64,592	78,100	86,410	94,710
SCWW/CCWW-36-32	4	1200	3.0	4.2	61,448	74,220	82,150	90,100
SCWW/CCWW-37-32	5	1200	3.0	4.2	66,031	79,890	88,350	96,820

All Technical Information Subject To Change Without Notice



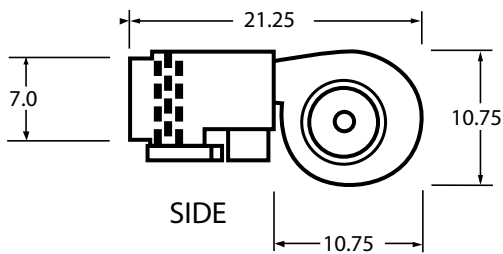
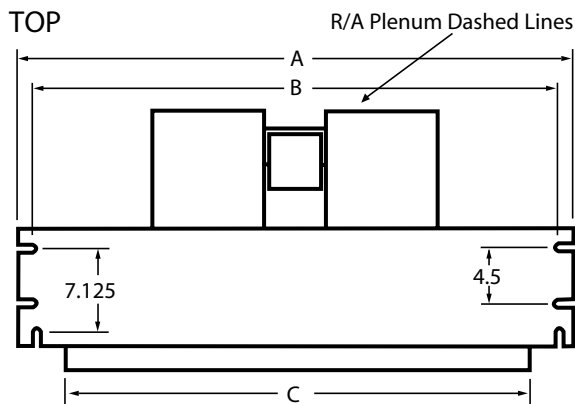
Form: SEHX/070106-8

For more information contact Customer Service 817-624-0820  
or your SunTherm Representative.  
501 Terminal Road Fort Worth, Texas 76106 Ph. 817-624-0820 Fx. 817-624-8581

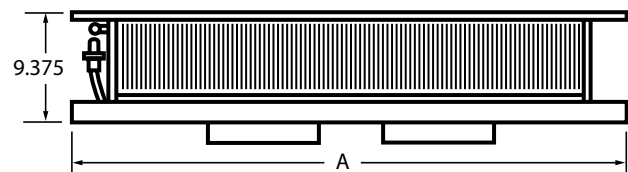


SEHX/CEHX Direct Expansion Cooling Electric Heating  
 SDXW/CDXW Direct Expansion Cooling Hot Water Heating  
 SCWE/CCWE Chilled Water Cooling Electric Heating  
 SCWW/CCWW Chilled Water Cooling Hot Water Heating

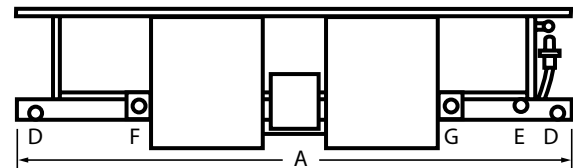
PHYSICAL DIMENSIONS (UNCASED)			
SEHX/SCWE/SDXW/SCWW	A	B	C
18, 19, 24,	37.00	34.25	30.00
25, 30, 31	45.00	45.25	38.00
34, 35	49.00	46.25	42.00
36, 37	56.00	53.25	49.00



FRONT



BACK



- D 3/4 MALE DRAIN CONN PRIMARY
- E 3/4 MALE DRAIN CONN SECONDARY
- F .875 POWER CONN
- G .562 THERMOSTAT CONN

All Technical Information Subject To Change Without Notice



For more information contact Customer Service 817-624-0820  
 or your SunTherm Representative.

501 Terminal Road Fort Worth, Texas 76106 Ph. 817-624-0820 Fx. 817-624-8581

Form: SEHX/070106-9

25,  
25,



